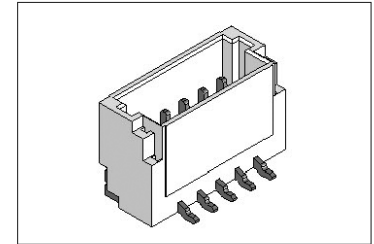
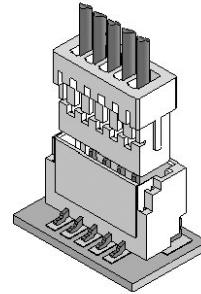
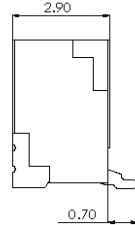
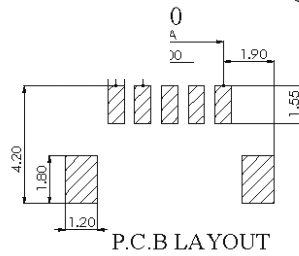
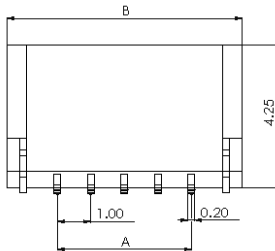
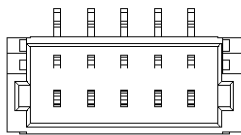


## Wafer 1.0 mm

### CSH100 Series

#### SPECIFICATIONS

Current Rating: 1 A, AC/DC  
 Voltage Rating: 50 V AC/DC  
 Temperature Range: -25°C ~ +85 °C  
 Contact Resistance: 20 mOhm max.  
 Insulator Resistance: 100 MOhm min.  
 Withstanding Voltage: AC 500 V / minute  
 Finished: Tin-plated / Gold-plated  
 Housing Material: Nylon-6T, UL 94V-0



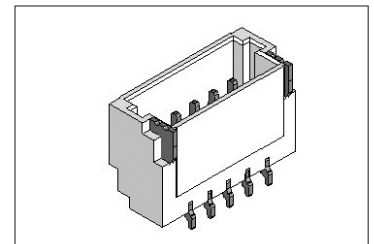
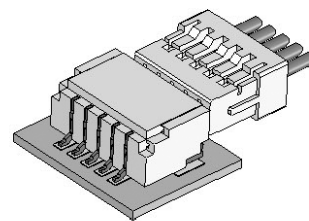
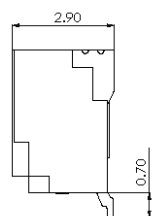
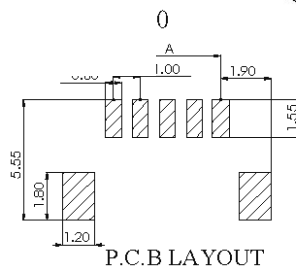
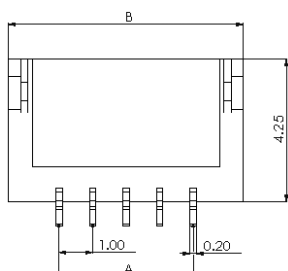
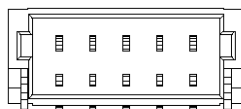
Number of Contacts  
**CCSH - W10 - XX**  
 (02 TO 20 Contacts)

Circuits	Dimension mm		Circuits	Dimension mm	
	A	B		A	B
2PIN	1.00	4.00	10PIN	9.00	12.00
3PIN	2.00	5.00	11PIN	10.00	13.00
4PIN	3.00	6.00	12PIN	11.00	14.00
5PIN	4.00	7.00	13PIN	12.00	15.00
6PIN	5.00	8.00	14PIN	13.00	16.00
7PIN	6.00	9.00	15PIN	14.00	17.00
8PIN	7.00	10.00	16PIN	15.00	18.00
9PIN	8.00	11.00	20PIN	19.00	22.00

Unit: mm

#### SPECIFICATIONS

Current Rating: 1 A, AC/DC  
 Voltage Rating: 50 V AC/DC  
 Temperature Range: -25°C ~ +85 °C  
 Contact Resistance: 20 mOhm max.  
 Insulator Resistance: 100 MOhm min.  
 Withstanding Voltage: AC 500 V / minute  
 Finished: Tin-plated / Gold-plated  
 Housing Material: Nylon-6T, UL 94V-0



Connector Type Number of Contacts  
**CCSH - W10 R - XX**  
 R:Right Angle (02 TO 20 Contacts)

Circuits	Dimension mm		Circuits	Dimension mm	
	A	B		A	B
2PIN	1.00	4.00	10PIN	9.00	12.00
3PIN	2.00	5.00	11PIN	10.00	13.00
4PIN	3.00	6.00	12PIN	11.00	14.00
5PIN	4.00	7.00	13PIN	12.00	15.00
6PIN	5.00	8.00	14PIN	13.00	16.00
7PIN	6.00	9.00	15PIN	14.00	17.00
8PIN	7.00	10.00	16PIN	15.00	18.00
9PIN	8.00	11.00	20PIN	19.00	22.00

Unit: mm